

International Process Plants

Coffee Roasting, Grinding & Packaging Plant

10,000 TPY



Your Partner for
Complete Plant Solutions

Visit us at: www.ippe.com

Brief Overview

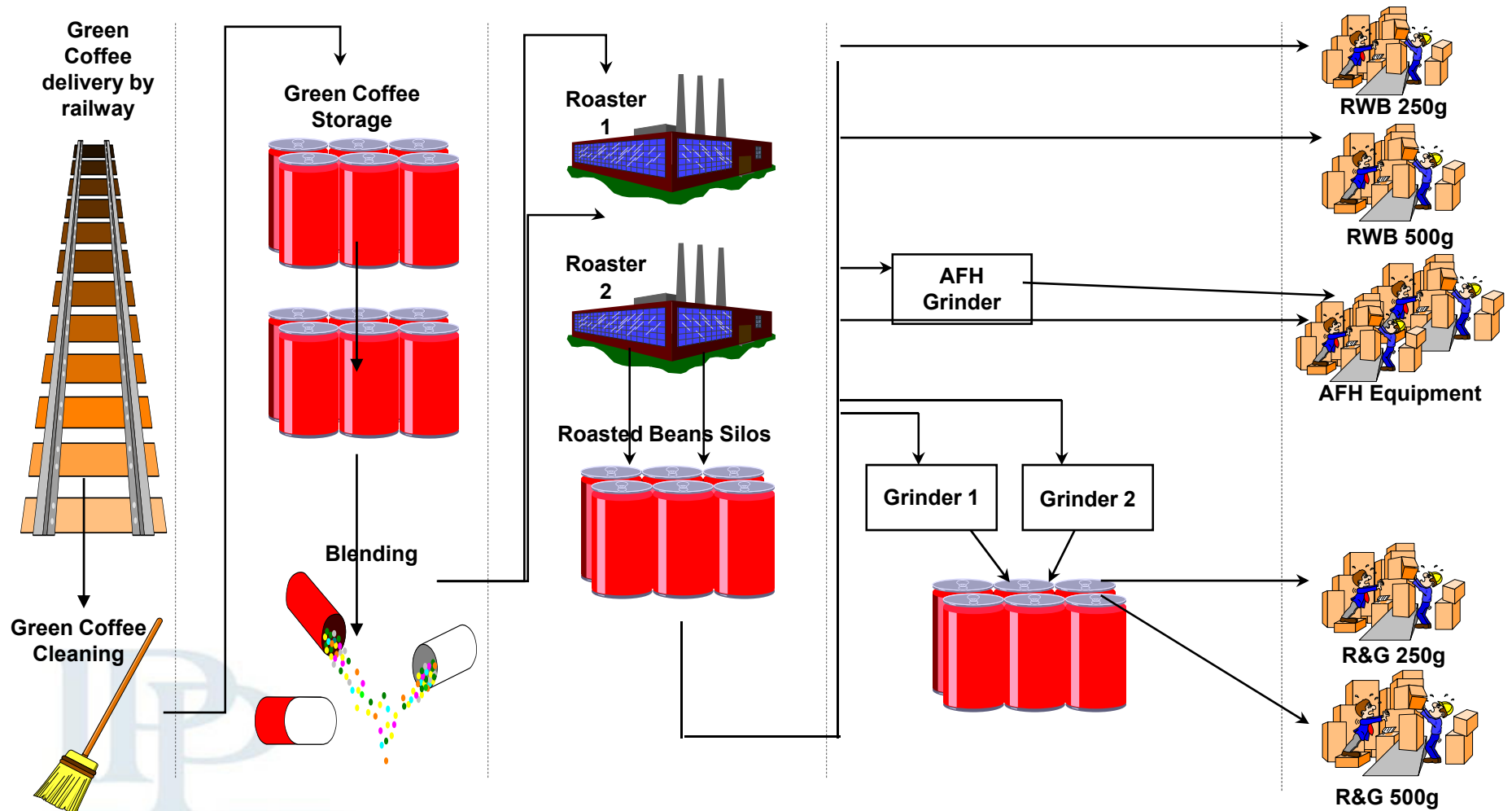
- Production: 24,000 metric tons/year Esters
- Units Included:
 - (1) Batch Ester Unit (vacuum to 3 bar): 20 metric tons, batch capacity
 - (1) Batch Ester unit (atmospheric): 9 metric tons, batch capacity
- Year Built/Shutdown: 1996 / 2009
- Technology: Free and Clear to Practice Worldwide
- Utilities: Electricity, Steam, Water and Fuel Gas
- Raw Materials: Fatty Acids, Alcohols
- Documentation: Available and Primarily Electronic
- Some spare parts for critical equipment are available with the sale.
- Process control systems and programming are completely up-to-date and are available for sale with the facility. They are Siemens PCS7 and Fisher-Provox systems.

Brief Overview

- Product : Coffee Roasting, Grinding & Packaging Plant
- Shutdown: Previously owned by Kraft Foods (Europe)
All lines were operational until January 2006
- Status: Available for immediate delivery
- Major Repairs: Last overhaul was in 2004
- Spare Parts: Available for all mentioned equipment
- Documentation: Complete / Available



Flow Sheet



Process Flow

	Capacity
Roasting	➤ 18,000 tons/year (with both roasters)
Grinding & Packaging	➤ 10,000 tons/year (with two shift)

Raw Material [Green Coffee Beans]

- Coffee Beans are received
- Beans are cleaned and removed of stones and wood impurities
- Cleaned coffee beans are stored in an intermediate hopper
- Blending operation for mixing different coffee beans as per the recipe (ex. from Ethiopia, from Uganda)

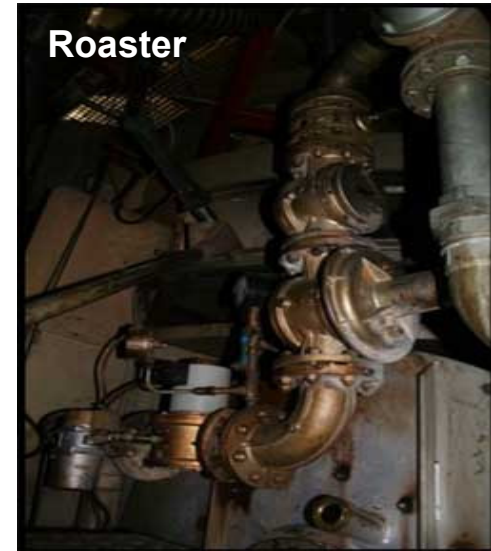
Process Flow continued

- Roaster (Batch Operation)
 - It takes in 250 kg per batch of coffee beans & gives 215 kg per batch of roasted coffee
 - Typical roasting temperature is 250° C with a roasting time of 5-7 minutes per batch
- Cooling off roasted beans (water is sprayed to cool the beans followed by cooled air)
- De-stoner (to remove stones which were not removed in the cleaning operation)
- Intermediate storage of roasted coffee
- Packaging of roasted whole bean (1 kg/bag); or
- Grinding of the roasted coffee beans
- Intermediate storage to degas the ground coffee to remove CO₂ (4-5 hours)
- Packaging in vacuum packs in sized of 250 kg or 500 kg per bag

Equipment

Roasters (Qty. 2)

Type	➤ Probat RZ 2500
Built	➤ 1982
Roaster Capacity	➤ 1500kg green coffee roasting/hr ➤ 18,000 tons/year with two roasters
Condition	➤ Good



Grinders (Qty. 2)

Capacity Variable	➤ Operated for 2 tons/hour
Manufacturer	➤ Buhler
Installation Date	➤ 1986
Including	➤ Spare parts ➤ Conveying pipes to coffee silos ➤ Coffee silos



Equipment

Bag in Bag Coffee Filling & Packing Lines (Qty. 2)

Capacity for Whole Line

250g	➤ 1,000kg/hours at reasonable efficiency
500g	➤ 2,000kg/hours at reasonable efficiency

Coffee Filler/Packer

Manufacturer	➤ Hesser, Germany
Type	➤ H-PLDBR312, vacu S24 3a
Manufactured	➤ 1981
Including	➤ Spare parts ➤ Conveying system (belt) to tray packer

Tray Packer

Manufacturer	➤ Skinetta (Kiener), Germany
Type	➤ TR151
Manufactured	➤ 1992
Including	➤ Spare parts ➤ Conveying system (belt) to palletizer

Palletizer

Manufacture	➤ Oli, Germany
Type	➤ IN 6A
Manufactured	➤ 1993
Including	➤ Spare parts

Equipment

Monobag Filling & Packing Lines (Qty. 1)

Capacity for Whole Line

1,000g ➤ 1,200kg/hour at reasonable efficiency

Tray Packer

Manufacturer ➤ ICA, Italy

Type ➤ FG76 with vacuum unit GV36

Manufactured ➤ 1989

Including ➤ Spare parts
 ➤ Conveying belt to box packer

Box Packer

Manufacturer ➤ Menegatti, Italy

Type ➤ RCS

Manufactured ➤ 1990

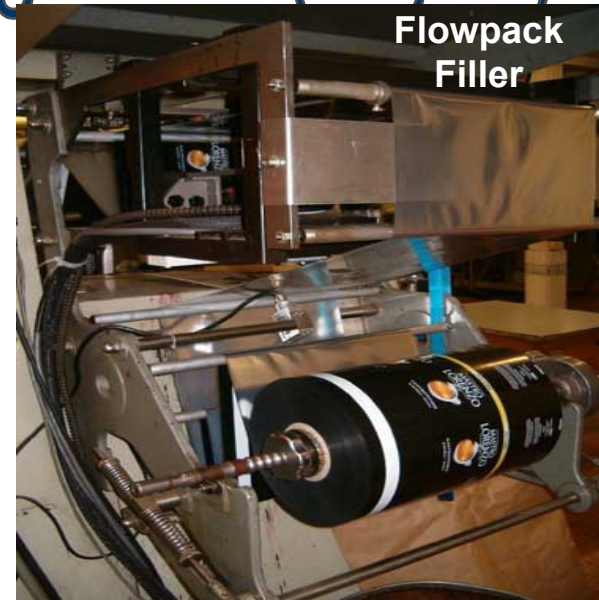
Including ➤ Spare parts

Equipment

Monobag Filling & Packing Lines (Qty. 1)

Flowpack Filler (Qty. 1)

Type	➤ VP
Manufacturer	➤ Rowema
Manufactured	➤ 1973
Capacity	➤ Depending on fill weight
Including	➤ Spare parts



Shrink Wrapping Machine (Qty. 1)

Type	➤ SBP4-54
Manufacturer	➤ MAF, Germany
Manufactured	➤ 1981
Capacity	➤ Depending on infeeding speed

Pictures



Bean Cleaning System



Hesser



Pictures



Air Transportation System



Vacuum System Pumps



Silos



Contact IPP Today!

MICHAEL JOACHIM

DIRECTOR, PLANTS DEPT.

Tele: 609-838-5930 (direct)

Mobile: 609-516-9107

MichaelJ@ippe.com

SANJEEV REGE

VP GLOBAL PLANT SALES

Tele: 609-838-5938 (direct)

Mobile: 609-510-2616

SanjeevR@ippe.com



**INTERNATIONAL
PROCESS PLANTS**

Your Partner for
Complete Plant Solutions

IPP World Headquarters

17A Marlen Drive ♦ Hamilton, NJ 08691 ♦ USA

Tele: +1 (609) 586 8004 ♦ Fax: +1 (609) 586 0002

Visit us at: www.ippe.com