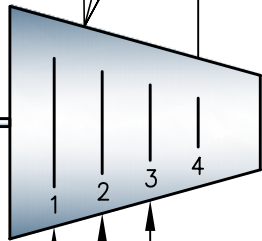


**YORK 4-STG. CENT. COMPRESSOR**  
 MODEL M43888  
 92,256 Lb/Hr  
 300 PSI RATING

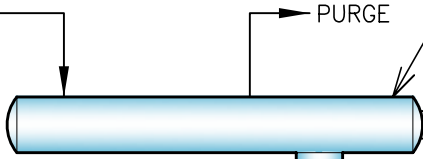
SIEMENS  
 1,500 HP  
 4,160 V

**MOTOR**  
**GEARBOX**  
 LUFKIN  
 1,736 RPM IN  
 6,616 RPM OUT



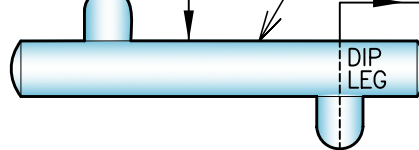
10"

**REFRIGERANT CONDENSER**  
 11.39 MM BTU/Hr 16,357 FT<sup>2</sup>  
 TUBE - 150 PSIG @ 250°F  
 SHELL - 300 PSIG @ -20/250°F  
 42"φ x 22'

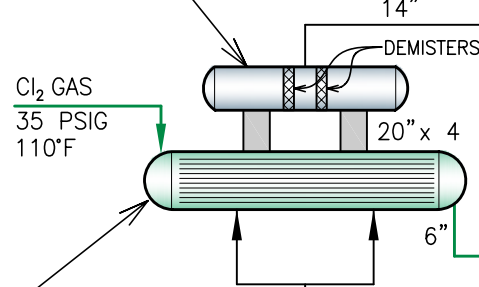


PURGE  
 COOLING TOWER  
 WATER

**REFRIGERANT ECONOMIZER/RECEIVER**  
 300 PSIG @ -20/200°F  
 54"φ x 16'



**REFRIGERANT ACCUMULATOR**  
 300 PSIG @ -20/200°F  
 48"φ x 20'



Cl<sub>2</sub> GAS  
 35 PSIG  
 110°F

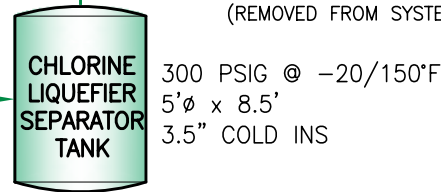
DEMISTERS

14"

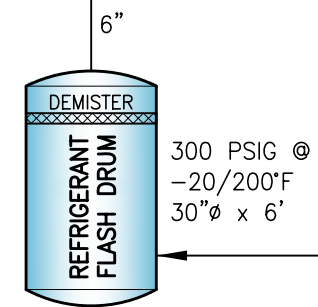
Cl<sub>2</sub> LIQ.  
 35 PSIG  
 0 - 5°F

**CHLORINE LIQUEFIER EXCHANGER**  
 7.8 MM BTU/Hr  
 5,616 FT<sup>2</sup>  
 38"φ x 26'

NON-CONDENSABLE  
 4" → **PRESSURE CONTROL SYSTEM**  
 (REMOVED FROM SYSTEM)



4" → **LIQ. Cl<sub>2</sub> STORAGE**  
 (REMOVED FROM SYSTEM)



300 PSIG @  
 -20/200°F  
 30"φ x 6'

**INTERNATIONAL PROCESS PLANTS**  
 17A Marlen Drive, Hamilton, NJ 08691  
 Phone: +1 609 586 8004  
 Fax: +1 609 586 0002  
 www.ippe.com

**Chlorine Liquefaction Plant  
 (2-Trains)**

DATE: 05/28/2008      PAGE 1 OF 1 SHEETS