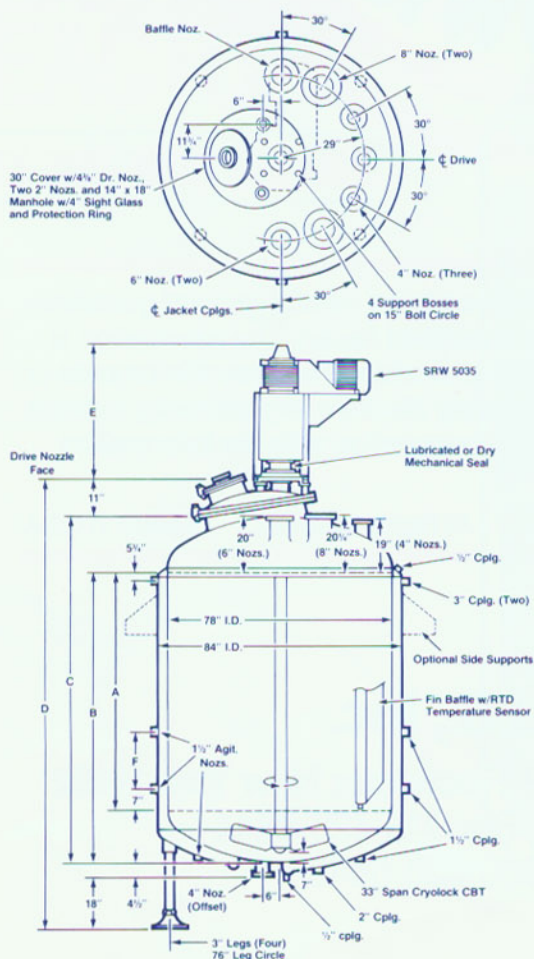


RA-78

DIMENSIONS

1500 gal. 2000 gal.

| | | |
|---------------|----------|----------|
| A | 65" | 84" |
| B | 84 1/2" | 103 1/2" |
| C | 104" | 123" |
| D | 137 1/2" | 156 1/2" |
| E SRW w/ seal | 47" | 47" |
| F | 18" | 20" |



RA SERIES STANDARD SPECIFICATIONS

| SPECIFICATIONS | RA48 | | RA60 | | RA78 | | RA96 | |
|---------------------------|------|------|-------|-------|-------|-------|-------|-------|
| | 300 | 500 | 750 | 1000 | 1500 | 2000 | 3000 | 4000 |
| CAPACITY (gallons) | | | | | | | | |
| Working | 300 | 500 | 750 | 1000 | 1500 | 2000 | 3000 | 4000 |
| Per Inch of S.S. | 7.83 | 7.83 | 12.24 | 12.24 | 20.69 | 20.69 | 31.33 | 31.33 |
| Bottom Head | 63 | 63 | 122 | 122 | 269 | 269 | 501 | 501 |
| Top Head | 63 | 63 | 122 | 122 | 269 | 269 | 501 | 501 |
| To Bottom of Impeller | 17 | 17 | 35 | 35 | 61 | 61 | 96 | 96 |
| To Top of Impeller Hub | 59 | 59 | 100 | 100 | 161 | 161 | 336 | 336 |
| To Bottom of Baffle | 96 | 96 | 181 | 181 | 316 | 316 | 619 | 619 |
| Jacket | 75 | 110 | 141 | 171 | 255 | 301 | 366 | 453 |

HEATING AREA (square feet)

| | | | | | | | | |
|------------------|------|------|------|------|------|------|------|------|
| Jacket | 53 | 80 | 96 | 122 | 158 | 191 | 236 | 300 |
| Bottom Head | 17.4 | 17.4 | 27.1 | 27.1 | 45.8 | 45.8 | 69.4 | 69.4 |
| Per Inch of S.S. | 1.05 | 1.05 | 1.31 | 1.31 | 1.70 | 1.70 | 2.09 | 2.09 |

DESIGN PRESSURE

| | | | | | | | | |
|------------------|--------|--------|--------|--------|--------|--------|--------|--------|
| Internal @ 450°F | 100/FV | 100/FV | 100/FV | 100/FV | 100/FV | 100/FV | 100/FV | 100/FV |
| Jacket @ 450°F | 100 | 100 | 90 | 90 | 90 | 90 | 90 | 90 |

STEEL THICKNESS (inches)

| <i>Inner Vessel</i> | | | | | | | | |
|---------------------|-----|-----|-----|-------|-------|-------|-------|-------|
| Top Head | 5/8 | 5/8 | 5/8 | 5/8 | 3/4 | 3/4 | 15/16 | 15/16 |
| Shell | 5/8 | 5/8 | 5/8 | 11/16 | 13/16 | 13/16 | 1 | 1 |
| Bottom Head | 5/8 | 5/8 | 5/8 | 5/8 | 3/4 | 3/4 | 15/16 | 15/16 |

Jacket

| | | | | | | | | |
|-------------|------|------|------|------|------|------|-----|-----|
| Shell | 5/16 | 5/16 | 3/8 | 3/8 | 7/16 | 7/16 | 1/2 | 1/2 |
| Bottom Head | 3/8 | 3/8 | 7/16 | 7/16 | 1/2 | 1/2 | 5/8 | 5/8 |

WEIGHT (pounds)

| | | | | | | | | |
|----------------------------|------|------|------|-------|-------|-------|-------|-------|
| Net - No Accessories | 3400 | 4550 | 6350 | 7600 | 12350 | 13150 | 21550 | 26100 |
| W/ SRW Drive, Agit, Baffle | 5100 | 6350 | 8450 | 10650 | 15550 | 16450 | 26550 | 32100 |
| Add For Shipment | 150 | 150 | 200 | 200 | 400 | 450 | 900 | 900 |

Design features

- Heavy-duty forged nozzles minimize distortion, reduce time-consuming gasket shimming.
- Split backing flanges, Class 150, supplied with all nozzles. Flanges rated Class 300 also available.
- 3000-psi series jacket couplings, baffled to prevent jacket media from impinging directly on vessel wall. Flanged jacket connections are optional.
- Conventional jacket equipped with agitating nozzles provides optimum liquid circulation in jacket. Optional half-pipe jacket can be either parallel-path or zoned.
- Adjustable pipe-leg supports are supplied on 300-through 4000-gallon. Side supports are optional.
- A complete set of Pfaudler® CRT envelope gaskets with stainless steel inserts is supplied with each vessel.
- CryoLock curved blade turbine is provided as standard. One piece retreat curve impellers and other CryoLock configurations are available.